

MINUTES

Cantley, Limpenhoe and Southwood's

Annual Parish Meeting

Thursday 28th March 2024, Cantley Village Hall, 7.00pm

Present: Dot Machin (Chair of Parish Council); Anne Tandy, Parish Clerk;

Members of the Public: 6

1. Apologies for absence received from Brenda Pawsey, Jan Davis and Steve Bennett
2. The minutes of the Annual Parish Meeting held on Thursday 18th May 2023 were approved.

3. Parish Council Reports:

- a. Chairman's Report was presented by Dot Machin (Appendix A)

4. Reports from Outside Bodies:

- a. County Councillors Report was read out to the meeting (Appendix B)
- b. District Councillors Report was read out at the meeting (Appendix C)
- c. Norfolk Police – Steve Gooden, Beat Manager based in Acle reported:

Priorities for the area are road safety and speeding. No Anti-Social Behavior in Cantley but speeding is a major issue particularly in regard to factory traffic. Police are liaising with the factory and security staff have been trained to use a speed gun and have been monitoring traffic outside the factory. With regard to the lorries, if caught twice the driver is banned from the site. It would be useful to raise a team of volunteers to run a Community Speedwatch group. This could be coordinated with Beighton. The Road Safety team at Norfolk Police have utilised their own SAM device and identified an issue with speeding. They are now looking to set up a site somewhere along the main road towards Cantley where they will be able to use a hand-held camera. The presence of this will not be previously notified.

The Commercial Vehicle Unit have also been working with the factory and carrying out stops and checks on factory vehicles to ensure they are legally licensed.

Pub walk and talks continue to be undertaken which enables local Police Officers to talk to residents about any issues they wish to raise, but all is well.

Crime: 28 in total:

1 burglary; 19 violent offences; 2 public order (civil matters); 1 theft of motor vehicle; 2 thefts; 1 drug driver; 1 sexual offence via a social media platform; 1 dog offence. Most of the offences were domestic in nature.

5. Reports from Local Organisations

a. British Sugar Factory representatives reported:

Still in operation; the current campaign running longer than normal this year due to wet weather. It is due to finish on approximately 15th April 2024. Other sites in the County have already had to stop due to other projects commencing. Residual sugar beet is now coming to Cantley. This is a record campaign of 188 days which is the longest to date. To help, an extra boiler has been brought in to produce more steam and run the factory quicker.

Ongoing Projects:

The Decarbonisation Project costing £10m for a gas and turbine boiler will bring a 16k reduction in carbon emissions and other particulates which affect air quality: particulates reduced by 50%. Climate change means bigger crops, so Cantley's future is secure. The installation of a new boiler will see a reduction of 500 lorries not bringing coal to the village.

Wastewater treatment plant is planned in line with European legislation requirements which result in the water quality being improved.

BS have been working with Norfolk Police in reducing the speed of lorries and staff. Further information in the Police report above.

Footpath rerouting has received one objection from the Open Land Society (OLS) who require the path to be 3m wide and laid to gravel. BS are currently in consultation to consider this. The factory are confident that with 70% of the rerouted path this can be achieved and the remaining section being made into a boardwalk with information boards and planting. Feedback from OLS is awaited. Once the planning work starts, the factory will work with the Council to improve the area of the Staithe.

- b. Cantley Flower Show (Appendix D)
- c. FOCUS Group (Appendix E)
- d. Limpenhoe Village Hall (Appendix F)
- e. Parish churches (Appendix G)
- f. Cantley Village Hall (Appendix H)
- g. Cantley Tree Warden (Appendix I)

6. General Parish Issues

Overhanging tree on Burnt House Road to be reported to Highways and a water leak at the same location to be reported to Anglian Water.

Meeting closed at: 20:04

CHAIRMAN

**Cantley, Limpenhoe and Southwood Parish Council
Annual Report 28th March 2024 Dot Machin (Chair)**

Parish Council has undergone a challenging year, but we have started the new Year full of optimism.

Last Year, after a protracted unsettled period, our then Parish Clerk resigned on grounds of ill health.

With the help of Norfolk Parish Training and Support Anne Tandy came to us, first, as a locum, but subsequently, we are pleased to say, she became our permanent Clerk.

As a result of this, we have been going through ‘catch up’ in terms of banking and financial matters, with Anne, in addition, reviewing and revising policies and procedures, across The Council, in line with best practice.

Other issues are progressing well:

We have a Sam2 in place, moving between Station Rd, and Burnt House Rd, and from data collected there is already some evidence that this is having a positive effect on speed levels.

Our Parish Partnership bid has been successful, and will enable us to extend The Trod around the Church, linking Church Rd to The Village Hall and to the Trod to Station Rd.

We have increased the mooring fees at The Staithe from £350 to £560 per year from April 2024, the first increase in fees since 2012, in order to build a realistic sum for the eventual replacement of the pontoons, and in order to develop and maintain the Village Green area at The Staithe for the leisure use of all members of the Parish. The Parish Council has contributed a sum to supplement this for the first time this year, and in addition we have been successful in obtaining a £300 Clean Up and Bloom grant to add to this project. We are still trying to get notice boards at The Staithe repaired and updated but are getting little response from The Broads Authority.

We have been less successful with The Village Green project at Limpenhoe. In the first instance, a combination of delays caused by Covid and sickness meant that the land became so unfit for purpose that it was beyond our financial means to create a useable space there. More recently, in spite of several attempts, we have been unable to secure the site on safety grounds and cannot afford to continue further. Consequently, Councillor Davies, in his role as District Councillor, has agreed to pursue the matter on environmental grounds.

We regularly report Potholes to Broadland District Council, again with limited success, and look forward to a time when Highways resume their regular visits to The Parish to consult locally on Highway issues.

Our District Councillors furnish us with monthly reports on DC issues, and after a long period of illness preventing County Council reports being available, we recently received an extremely comprehensive one so hopefully we will be updated regularly once again

So, with work still to do, but with matters much closer to being under control, I believe Council is now in a position to confidently look forward to a positive and productive year ahead.

Appendix B

District Councillor Report for the Cantley, Limpenhoe and Southwood Annual Parish Meeting – 28 March 2024

This report outlines the activities of the two district councillors for Brundall Ward (Cllr Jan Davis and Cllr Eleanor Laming) over the last year.

We have attended the Main Council meetings throughout the year at Broadland District Council (BDC). Following the May 2023 local elections a partnership of Liberal Democrat, Labour and Green councillors formed the council administration.

Cllr Davis is a member of the Cabinet and holds the Environment Portfolio which covers a wide remit including waste and recycling, street lighting, gypsies and travellers, community protection and environmental quality, licensing, food safety, burials, public health protection and nutrient neutrality.

Cllr Davis is a BDC representative on the following organisations: Broadland Futures Initiative Elected Members Forum; Community Rail Norfolk; Broads (2006) Internal Drainage Board; Norfolk Strategic Flood Alliance; Norfolk Waste Partnership.

Cllr Laming has a place on the following committees/panels: Planning, Overview and Scrutiny, Communities Housing and Planning, Awards and Standards.

We have attended main parish council meetings for Postwick, Brundall, Strumpshaw and Cantley and cluster group meetings (at which representatives of local parish councils meet to share ideas and current issues). We have raised issues on their behalf and submitted regular update reports.

We corresponded with residents over a wide range of matters such as planning and enforcement issues, light pollution, highways concerns mainly related to pot-holes, road safety and bus service provision, waste collections and fly tipping.

We have commented on several planning applications where appropriate, both in the ward and in neighbouring wards, and called in contentious applications to planning committees on both BDC and the Broads Authority.

We supported a motion to BDC to agree to declare a Climate and Biodiversity Emergency at Main Council on 27 July 2023, to take action accordingly within the limits of its resources and powers and report back annually on progress. We supported a motion to BDC on 14 December 2023 asking the Council to Declare Support for the Climate and Ecology (CE) Bill. (a private members bill before the House of Commons which aims to align current UK environmental policy with the need to halt and reverse nature loss by 2030).

We have responded to consultations on NCC Green Spaces in the Greater Norwich area and the Local Cycling and Walking Infrastructure Plan (LCWIP) for Norfolk.

Cllr Davis took part in a Mental Health First Aid training course for community organisations organised by the BDC Mindful Towns and Villages Team. Both Brundall and Cantley are now Mindful Villages.

Cllr Davis spoke about Local Government to Brundall Guides and Cantley W.I.

We supported the increase of the Member Ward Grant to £1000 per council member (a grant that each district councillor has to spend on projects within their wards) and the creation of a Community Grant Scheme for larger projects.

Cllr Davis used his Member's Ward Grant to fund the purchase of an 8-seater wheelchair accessible round top recycled plastic table for Limpenhoe Village Hall, and Cllr Laming's grant has part funded a new ramp for Snowy's Pre-School and Nursery, Brundall.

We have attended the following events and meetings: Open Day at Blackwater Carr, Brundall Armistice Day and Remembrance Day services, Gridserve Launch Event, Brundall Lions Fete and the BDC Harvest Civic Service.

Cllr Davis has continued to liaise with Anglian Water and the Norfolk County Council Flood and Water Manager re flooding issues in the ward in both Strumpshaw and Cantley. He attended an East of England Water Summit on 8 March 2024 which considered the seemingly contradictory challenges of flooding in the winter and water scarcity in the summer.

Cllr Davis and Cllr Laming have raised concerns about the potential loss of the Postwick park and ride service and continue to lobby for it to be retained along with improved public transport serving the communities to the east of Norwich.

(submitted by Cllr Jan Davis and Cllr Eleanor Laming – 20/03/24)

Abbreviations:

BDC – Broadland District Council

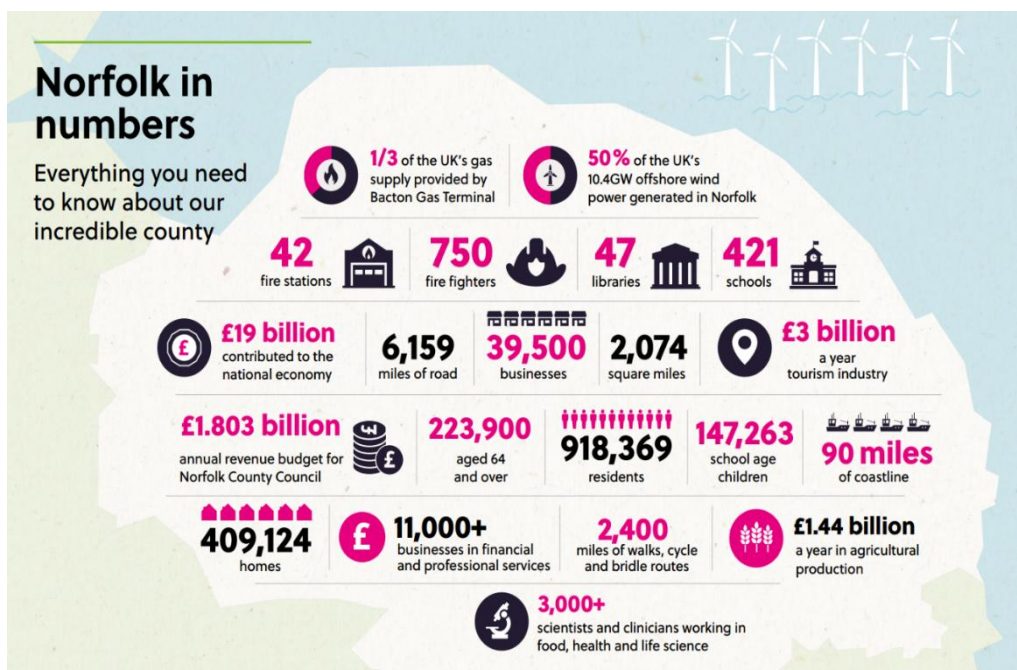
NCC – Norfolk County Council

Appendix C

COUNTY COUNCILLOR ANNUAL REPORT MARCH 2024

Norfolk County Council Annual Report 2023/24

- 97.4% of highways inspections completed within timescale
- 96.8% of 'Priority A' defects (classified as dangerous/emergency) were fixed within the Transport Asset Management Plan timescales
- 95% Customer satisfaction (with Council Services)
- 96% of Looked after Children with an up-to-date Personal Education Plan
- Completed over 90,000 Adult Social Care Assessments for over 26,000 people



Net budget of £528m for 2024-25

Local government still has considerable financial challenges to face. The 2023-24 budget is projected to come in without any shortfall and the budget for 2024-25 is an increase in spend.

The key headlines are:

- £122m of investment to meet demand and cost pressures - including £34.6m for inflation, £38m for legislative requirements, £39.7m for demand and demographic issues and £9.6m for policy decisions.
- £41.5m of new savings, including £9.6m from transforming how the council operates.
- A proposed 4.99% increase in the County Council's share of Council Tax, in line with the Government's capping level (2.99% for general Council Tax and 2% for adult social care generating £24.9m additional income.
- A small number of the budget proposals have been identified as requiring consultation, as they may relate to a policy or service change. Cabinet will take decisions on these proposals in the summer, after considering the consultation results.

£600 million devolution deal still on track

Government funding will start transferring to Norfolk in 2025, if councillors vote in July 2024 to stage the first election for a leader in May 2025. The deal will mean that decisions can be taken in Norfolk, for Norfolk.

Through the County Deal Norfolk has a major opportunity to gain new powers and funding from the Government. This would be through an investment fund of £600m over 30 years, transfer of the Adult Education budget (c£12m) together with other funds to invest in transport, skills and job opportunities, housing and regeneration, tailored to the needs of local people. This will open the door to further powers and funding in the future.

Household Support Fund

This has been operating for 3 years and was due to conclude on 31 March 2024 using funding from the Department for Work and Pensions (DWP). The Chancellor of the Exchequer announced in the Budget that this funding would be extended by a further six months. The council has received £13.4m from central government and added an additional £400,000 to make the total programme of support worth £13.8m. It is working closely with district, borough, and city councils, VCSE and public sector partners to identify and implement a range of support measures to meet the needs of vulnerable households.

New £4.51m funding for roads and footpaths

More roads and footpaths across the County will be repaired by Norfolk County Council during this coming year as part of additional Government funding.

Roads from Great Yarmouth to King's Lynn, from Hunstanton to Thetford and many in between will receive reclamite spray or resurfacing along with footpath construction to ensure Norfolk's infrastructure can best help people to get to work, travel to services and access Norfolk's natural and cultural assets through effective highways maintenance. This is in addition to the Council's highways asset management and maintenance programme.

Twenty-seven brand new gritters joined Norfolk's fleet

Twenty-seven brand new gritters took to the roads for the first time this winter in a £3,238,000 boost to the annual push to help keep Norfolk moving safely during the winter months.

Norfolk's fleet of 58 winter vehicles treat 2,200 miles of roads on each full 3-hour gritting run. All A and B-class roads and some C-class roads are treated with a focus on commuter and major bus routes and as far as is possible one route into all villages. The A11 and A47 are gritted by National Highways.

In addition to the 49 gritting routes, a number of pedestrian areas and main pavements are treated in the centre of Norwich, Great Yarmouth and King's Lynn, and more than 2000 grit bins are available around the county for people to use on roads, pavements and cycle paths.

Norfolk flood protection

The threat posed by flooding and coastal erosion in Norfolk has been laid out starkly for MPs as the council took their case for change to the heart of Westminster.

The delegation from Norfolk, led by Norfolk County Council Leader Cllr Kay Mason Billig and the Chair of the Norfolk Strategic Flood Alliance (NSFA), Henry Cator, met with MPs, on the 71st anniversary of the 1953 North Sea Flood, to explain the risks Norfolk faces and how those risks could be addressed.

As demonstrated over this winter, our county faces regular risks of flooding, with Norfolk ranked tenth most at risk of surface water flooding out of 149 local authority areas. In addition, the county's position on the North Sea exposes it to tidal threats as well as significant coastal erosion: without action, it's estimated that in North Norfolk alone approximately 1,030 residential and commercial properties could be lost to erosion by 2100. That number could be up to 10,000 in all of Norfolk.

The key elements presented were:

- Push for legislative permission to build reservoirs designed to capture excess water in times of flood, for use in times of drought
- Advocate for Property Flood Protection measures to be granted directly to the Lead Local Flood Authority (LLFA) for faster allocation for those who need it
- Reduce bureaucracy by granting greater autonomy in funding allocation for surface water flood mitigation schemes
- Combine enforcement and maintenance powers and responsibilities for LLFA's
- Support the creation of a dedicated Minister for the Coast

£1 million boost for Highway Parish Partnership Schemes

Schemes totalling over £1m will be co-funded across Norfolk to deliver the wants and needs of local parishes and residents as part of the Highway Parish Partnership. with the County Council funding up to 50% of bid costs.

A County Council contribution of £467,884 and a Safety Camera Partnership contribution of £43,760 along with funding from Town and Parish Councils, will enable a programme of local works totalling £1,040,586 to be delivered in 2024-25.

More people 'choose the bus' in Norfolk

It's been just over a year since Norfolk County Council received £49.55m of funding from the Department for Transport (DfT) to improve bus services across the county, the 6th highest in the country. There have been huge numbers of improvements already made across the county, and the latest figures show that passenger numbers have increased throughout the year with the number of fare-paying passengers now exceeding pre-covid levels.

Latest figures for Norfolk show that overall bus passenger numbers have increased by 18% in the last year with the number of fare-paying passengers now at 107% compared to pre-pandemic baseline figures. Norfolk is bucking the trend as nationally bus usage figures are at between 89% to 98% of pre-pandemic levels*.

Concessionary pass holders, who have been the slowest to return to using the bus since the pandemic, are now at 83% of pre-pandemic.

The funding is being used to providing new or expanded bus routes, increased service frequencies on key routes, including more evening and weekend services.

In addition to the service enhancements year there have also been infrastructure improvements including the first Travel Norfolk Travel Hub in North Walsham and improved waiting areas with real-time information.

Bus travel has also become cheaper this year and offers great value for money thanks not only to the Government fare cap which most operators in Norfolk have signed up to but also 4 local fares offers delivered thanks to the bus service improvement plan:

- £1.50 flat fares for King's Lynn
- £1.50 flat fares for Thetford
- 25% off group, weekly and monthly tickets
- Reduced park & ride fares

24/7 free travel to all disabled bus pass holders in Norfolk

From 1 February 2024 all Norfolk residents who hold a disabled concessionary travel pass have been eligible for free bus travel 24 hours a day, seven days a week when travelling within the county, meaning that more than 14,500 people across the county who hold a concessionary bus pass due to disability, and their eligible companions, will now be able to travel on any bus at any time free of charge across Norfolk.

Offering free travel at all times is over and above the minimum requirement set by government, and is something that a local authority can choose to do but doesn't have to do. The change was recommended following an updated equality impact assessment of the scheme which concluded that it is now unfair to offer a discretionary enhancement to just one group of disabled people (i.e. those who are blind or visually impaired).

Free DIY waste disposal for small projects

Norfolk residents have been able to dispose of small amounts of DIY waste at Norfolk's Recycling Centres free of charge from 31st December following changes made by Norfolk County Council after Government abolished charges for the disposal of limited amounts and types of DIY waste at recycling centres across the UK.

The change applies to small-scale projects carried out by householders on their own home, allowing them to bring a maximum 100 litres (must fit into 2 x 50l bags) for free or one single item (maximum size of 200cm x 70cm x 75cm). Each household is allowed four free visits with DIY waste every four weeks. Anything beyond this will still be charged at normal rates.

Climate Strategy launched

Norfolk County Council's Climate Strategy was launched at Gressenhall Farm and Workhouse Museum with special guest Kate Strong, world record holder and endurance cyclist.

The Climate Strategy sets out how the council will work not only to reduce its own carbon emissions, but to drive down emissions across the county, protect the unique environment of Norfolk, and to seize the opportunities the move to a green economy represents, securing investment and growth for Norfolk.

Key proposals include:

- Supporting active and sustainable transport, including further bus improvements and electric vehicle charging
- Providing space for nature and developing a nature recovery strategy
- Retrofitting council buildings to take out gas and oil heating and improve insulation – and encouraging businesses, residents and other organisations to do the same
- Reducing emissions from the council's companies, such as Norse
- Developing the green economy, with support for green skills, sustainable tourism and businesses
- The development of a nature recovery strategy to protect our natural assets and encourage greater biodiversity
- Working with the Tyndall Centre for climate change research at the University of East Anglia, to understand climate change impacts and how Norfolk might adapt to them
- Close collaboration between public sector, business, community and voluntary groups

Norfolk County Council environmental credentials praised in review

Norfolk County Council is doing better than almost every other county council in the country at moving towards net zero, according to an independent assessment.

Campaign group Climate Emergency UK produced scorecards marking action by councils on climate change, including areas such as buildings, transport, planning and biodiversity.

Norfolk was placed joint second with Devon among county councils, with only Oxfordshire ranked higher, after a nine-month assessment process.

Norfolk Fire and Rescue Service

The efforts of fire fighters, fire staff, their friends and families and community partners and volunteers, showing how everyone has a unique part to play in to make in making the service great were recognised at the Norfolk Fire and Rescue Service Annual Staff Awards.

Achievements including saving a village from the clutches of wildfire, helping transport a horse mannequin called Brandy, and restoring a fire station flower garden.

Adult Learning service rated 'Good' by Ofsted

Norfolk County Council's Adult Learning has been rated as 'Good' following their latest Ofsted inspection.

The inspection report praised the ambition of the service, which provides community-based and online learning for around 6,000 adults a year. The service achieved a 'Good' rating across all six areas that were inspected, alongside the overall 'Good' rating.

Inspectors commented that learners are 'highly motivated' and committed to their studies. They praised the number of people who have a 'clear plan' for their future careers and that they want to improve their economic prospects.

In particular, inspectors highlighted the work with residents of retirement homes who have increased their confidence, self-care and resilience after completing courses in basic cookery. They commented how, following the course, learners felt less isolated and 'excited to prepare and eat their own meals'.

It was also recognised that the service has responded effectively to the growing demand for English for speakers of other languages (ESOL) courses.

There was praise for the work with Norfolk Fire and Rescue Service apprentices. The inspectors saw how the course helps them to work safely while learning about the importance of health and nutrition. The report concluded that the 'apprenticeship is well matched to the needs of the fire service.'

This inspection result comes on the back of Norfolk County Council Adult Learning being named 'Further or Higher Education Provider of the Year' at this year's Norfolk Education Awards.

More than ten thousand Norfolk children benefit from mental health programme in first year

A children's mental health and wellbeing programme, funded by Norfolk County Council, has supported more than 10,000 in its first year.

The Rise Up programme gives children and young people valuable knowledge and strategies to support their mental health and is being delivered in secondary and special schools across the county. 93% of young people said that their ability to manage their wellbeing improved after completing the programme.

Created and delivered by Future Action, in partnership with Norfolk County Council's Virtual School for Children in Care, Previously in Care and Children with a Social Worker, the course aims to help children build confidence, reduce their anxiety, and create a sustainable wellbeing programme within 90 days.

Increase in the number of school preferences a parent can make from 3 to 4

Following a review of the admission process for September 2023 and the difficulties some parents experienced with not being offered a place at one of their preferred schools, the current admission arrangements have been reviewed and consulted on to see an increase of the number of preferences from 3 to 4 to help improve admission decisions for families.

The School Admissions Code states that parents must be able to express a preference for at least 3 schools and requires admission authorities to consult on changes for six weeks between 1 October and 31 January where changes are proposed. The consultation run by the Local Authority opened on 31 October and closed 15 December 2023. Only one completed response was received, and the respondent supported the proposal.

New Norfolk Rural Business Awards

Norfolk County Council and the Royal Norfolk Agricultural Association have joined forces to launch the new Norfolk Rural Business Awards.

The awards were announced at the recent annual Norfolk Farming Conference and are designed to recognise the essential nature and huge importance of Norfolk's rural communities and businesses to the region. They will highlight the very best of Norfolk from nine sponsored category areas aimed at showcasing a wide range of Norfolk's businesses, community groups and people.

Agriculture, forestry and fishing is the fourth largest sector in Norfolk, accounting for an estimated 8pc of all businesses - with many other businesses closely linked to the sector including those in accommodation, retail, food science, technology and engineering.

The award categories are: Best Rural Community Initiative; Best Farming Innovation Adopter; Best Food Producer; Norfolk's Unsung Hero; Best Drink Maker; Best Farming Champion; Best Emerging Talent; Best High Growth Business; Best Sustainable Land Use / Farming Exemplar.

Winners will receive a trophy, a certificate, and be able to use Norfolk Rural Awards branding in their promotions. They will be announced at the the Royal Norfolk Show in June.

Judging will include a visit to all shortlisted businesses, and each finalist will be asked to participate in a short film.

The entry deadline is 19 April 2024.

New Film Office for Norfolk

Norfolk County Council has awarded a 2-year contract to manage a new Norfolk Film Office to the Norwich based company, Norfolk Screen.

The Norfolk Film Office will proactively promote Norfolk and its assets as a location for TV and film productions, as well as act as the front door for any location enquiries, to ensure our county capitalises on the growth of the UK TV and film sector.

The two-year pilot film office programme aims to generate an increase in economic activity for the county via an increase in filming activity, and to confirm the viability of a stand-alone Film Office.

The pilot project has been made possible thanks to support from all Norfolk's local authorities and together we hope to achieve great things for the benefit of the local economy, the local screen sector and associated bodies.

Location scouts searching for sites and new locations wishing to register with the film office are encouraged to [contact Norfolk Screen](#).

Norwich Western Link update

It was agreed that this major infrastructure project for Norfolk progresses to crucial next steps in its development including submitting a planning application.

It is now expected that initial works will start in late 2025, with the start of the main construction works in summer 2026, and the road open for use in 2029.

The revised budget for the project is now £273.9m, an increase of £22.8m from the previous budget agreed in July 2022. However, the Department for Transport have indicated that they could provide funding of up to 100% of the costs set out at the OBC stage, which stood at £251.1m, although this has not yet been finalised. If the government provided £251.1m of funding, the local contribution required towards the overall cost of the project would be £22.8m which is less than previously anticipated - even with the overall budget increase.

Herring Bridge open

Initially known as the Great Yarmouth Third River Crossing, Herring Bridge in Great Yarmouth came into operation for river traffic from 7am on Monday 27 November 2023.

This was a major infrastructure project delivered by Norfolk County Council with government funding.

West Winch Housing Access Road

The West Winch Housing Access Road will serve the West Winch Growth area which will see up to 4,000 new homes built over the next 20 years. The proposed route connects the A10 to the A47 along a new 1.5-mile road. The road would join the A47 via a new roundabout and the A47 would be dualled between Hardwick and the new road.

The County Council recently submitted their latest business case to government which would see a significant proportion of the £84.47m project costs met by the Department for Transport. The project has been assessed as 'high value for money' according to the Department for Transport's criteria. Developers will contribute £14.6m towards the cost of the road which is set out in the [Strategic Infrastructure Delivery Plan](#).

New homes in Hopton by Repton Property Developments

The first tenants have moved into the 200 home Bowlers Green development in Hopton-on-Sea, which was created by the county council's property company, Repton Property Developments in partnership with Lovell Homes.

This has come from the partnership between Repton, Lovell and Flagship to provide more affordable and high quality homes in Hopton complementing the almost completed scheme at Acle.

Flagship has purchased 60 of the 200 homes, for rent or shared ownership. So far, 23 of the 60 homes have been completed and the remainder should be completed next year.

Broadband boost for rural homes and businesses in Norfolk

Homes and businesses in southern and eastern parts of England, including Norfolk, are set to benefit from new lightning-fast broadband connections backed by almost £320 million of UK government investment.

Around 62,000 homes and businesses in Norfolk stand to benefit from £114 million of this Project Gigabit investment, across locations including Buxton, Castle Acre and Horning. CityFibre, the UK's largest independent full-fibre provider, will deliver the gigabit-capable infrastructure.

CityFibre have also committed to providing internship opportunities for local people, with all interns to be offered long-term employment in the supply chain. They say that this commitment to skills and training in Norfolk will be bolstered by the creation of 40 18-month apprenticeship opportunities as well as work experience placements for local students undertaking Construction and Digital T-levels.

CANTLEY AND DISTRICT FLOWER SHOW

Annual report 2023/24

We had another successful Show last September.

The Henry Preston Cup for the best exhibit in the Show was won by Cheryl Nicholls for a lovely embroidery.

We were pleased to welcome Lucy Daisley-Cramp, Head of Cantley School, to present the trophies.

Poster Competition subject in 2023 was “Our Beautiful Broads”.

The Flower Show section of the Cantley.org web site is up to date and contains full details of the Flower Show. It also contains our new online entry form. You can now email your entry form prior to the Show. Thank you to Roger Hewin for administering the website.

We made a donation of £500.00 to the Village Hall Fund.

We were pleased to welcome Mike and Paula Harpin to our committee. They have taken on the role of dealing with the completed entry forms, identifying the winners and paying out any prize money.

We also welcomed Tina Nichols-Taylor to our committee.

Thankyou to Cantley Factory for assisting in printing the programmes and supporting the raffle, and to the Wherry Lines for supporting the Poster Competition prizes.

I would like to thank all the members of the Flower Show committee and all the other helpers for their hard work and support during the year and on the day to make the Show successful. I would also like to thank Matt Goodrum for doing the auction and Carol Drew and Lin Smeethe for doing the refreshments. Also a big thank you to all of you who enter.

This year's show will be on 7th September 2024. We look forward to seeing you then.

Robert Beadle Chair

Appendix E

FOCUS - Friends of Cantley Station - March 2024

=====

We continue to tend the station two mornings a week in varying numbers as health and time permit. The weather has been less inclined to freeze us out over the winter which has been a bonus.

The daffodils along the down platform are giving their usual splash of colour. We hope our new roses further along will have a kinder year with regard to the weather too. We have a limited quantity of water available, so another drought will challenge them again. All but one did survive last year. The old rose border by the lamp hut on the up platform is coming to life and should produce its wide variety of colour soon. With the mild winter, the weeds have made an early start, but we are tackling them as quickly as we can.

We have planted more wildflower seeds along the up platform, thanks to assistance from the Norfolk Wildlife Trust in the form of advice and some seed supply. New plaques are in place to explain what we are trying to achieve. Thanks are due to Steve Smith for making the bespoke stands for the plaques, which makes them much more obvious and readable.

The service display units continue to perform intermittently, particularly on the down platform. We have spoken to a contractor who informed us that they are dependent on the 4G network, which requires good reception conditions, as the nearest transmission point is Brundall. He assured us that the problem is understood, but it seems to require regular visits by them to reset the system. Our main concern last year was the state of the roof on the down platform shelter. It was reported months ago but we have now been informed that it is on Greater Anglia's to do list, but still awaits finance. It causes us a problem as water leaking through the roof fails to arrive in our large water butt. There is no other source of water on that platform which contains the vast majority of our flowers and it's also on the south facing sunny side.

We would like to thank the Parish Council for their financial support and we are also grateful for the garden vouchers which we receive from Greater Anglia. It helps us greatly to keep the station abundant and colourful.

Cantley villagers and rail travellers continue to thank us for our efforts, which is much appreciated. Some villagers have also helped by providing plants for us. Thanks to all the team for turning out regularly. None of us are getting any younger, but we hope that we can continue to manage for some time yet!

TD 20-03-24

Appendix F

Limpenhoe Village Hall NORFOLK

ANNUAL REPORT FOR 2023

Overview

Events and bookings in 2023 improved on the previous year. Weekly yoga continued, private bookings increased and it was again the play area that attracted the most bookings for children's parties and family related events. A monthly Breakfast Club, in conjunction with St. Botolph's Church, started in March and has been hugely popular and very well supported.

Some very well attended events took place, organised by the village hall committee.

- St. George's Day lunch in April was sold out
- Wedding catering (Afternoon Tea) for over 100 people in June
- Cantley fun day in July, where the best BBQ in Norfolk sold out of everything!
- Quiz Night in October
- HMS Gloucester Talk in December (in conjunction with St. Botolph's Church)
- Mulled wine, minced pies and sausage rolls were well received after the Carol Service & Nativity in December and we had more children than ever in the Nativity.
- New Year's Eve 70th Themed Party

Maintenance & Restoration

Four of the windows in the main hall, which have aluminium inserts in wooden frames, are in need of replacement. A planning application was submitted in November and the outcome is awaited. Replacement is quite urgent as the windows now leak in places and the fabric of the building is suffering.

Our much used picnic tables are now at the end of their life and replacements have been sourced from British Recycled Plastic. Fund raising has continued and we expect to have them in place in the first quarter of 2024.

Play Area

We kept the Play Area open throughout 2023, and it was, as ever, very well used. Created in 2002 with a mixture of Lottery funding and funds raised by the Committee, it has exceeded all expectations for a small rural facility. The majority of the play equipment is constructed of wood and increasingly over the last few years this has needed more and more repair.

We have raised over £6,000 towards replacement equipment but have so far been unable to source other funding. This remains work in progress.

Governance

The Play Area was regularly checked and had its annual inspection.

The AGM took place in May.

All necessary safety checks were completed and regular inspections carried out to ensure everything was in good order in the hall.

Food Hygiene Certificates have been obtained by all people catering for the Breakfast Club and the Hall has been awarded a five-star rating for its facilities.

Pat Bennett

Outgoing Chair – Limpenhoe Village Hall

21st March 2024

Appendix G

Parish of Limpenhoe, Southwood & Cantley, NORFOLK

ANNUAL REPORT for 2023

Incumbent: Rev'd Martin Greenland

Background

The Parish comprises three Churches, St. Botolph in Limpenhoe, St. Margaret in Cantley and St. Edmund (ruin) in Southwood. It is part of the Diocese of Norwich within the Church of England. The parish is rural with few amenities and forms one of seven in the United Benefice of the Acle and Bure to Yare, which was established in June 2015 following a reorganisation of the Blofield Deanery.

Aim and Purpose

Limpenhoe, Southwood & Cantley Parochial Church Council has the responsibility for co-operating with the incumbent, the Reverend Martin Greenland, in promoting the ecclesiastical parish, the whole mission of the Church, pastoral, evangelistic, social and ecumenical. The PCC is also responsible for the maintenance of the Church of St. Botolph.

It also has oversight for the remains of St. Edmund, Southwood, which was closed in 1881 and is now a Grade II listed building and Scheduled Ancient Monument. Historic England have been asked to decide the future maintenance work required. Currently £4069 is held in restricted funds, which is to be used towards this work. The churchyard is included in the NWT Churchyard Conservation Scheme and has been managed by BADCOG since 1990.

The Parish Church of St. Margaret, Cantley is leased to the Diocese of Norwich Churches Trust, which is responsible for its maintenance.

Objectives and Activities

The PCC is committed to enabling as many people as possible to worship at their church and to become part of our parish community. Also, to keep the church open and allow regular access for those requiring a place for quiet reflection and prayer. Following the formation of a Friends Group in 2022, it is also a priority to enable as many groups as possible to use the Church. Champing was commenced in May and has proved very popular. A monthly Breakfast Club was started in March (in conjunction with the Village Hall) and this goes from strength to strength. There have been Art Classes, a talk about HMS Gloucester and several working parties in the churchyard.

Worship and Prayer

Regular church services were conducted in 2023 and there were 21 services up to the end of December, there was 2 funerals and one wedding in June. The average attendance (excluding the funerals and wedding) was 11.7 The largest congregations were at the Easter Service (34) and the Christmas Carol Service (41) At present there are 9 parishioners on the Church Electoral Roll. 7 services were Holy Communion, conducted by Rev Martin Greenland and 14 were Morning Prayer, conducted by Sarah Mules our Authorised Worshipping Assistant.

7 services were held at St. Margaret's, Cantley, during the year, four of them in conjunction with the primary school. The Carol Service was very well supported with 67 in attendance at the community Carol Service (there was a separate Carol Service for the school).

Structure, governance and management

The PCC members are responsible for making decisions on all matters of general concern and importance to the parish including deciding on how the funds of the PCC are to be spent. The method of appointment of PCC members is set out in the Church Representation Rules. The membership of the PCC consists of the incumbent (our Rector), and members elected by those members of the congregation who are on the electoral roll of the church. All those who attend our services are encouraged to register on the Electoral Roll and stand for election to the PCC. At present there are 9 parishioners on the church Electoral Roll.

We recognise that our work with children, young people and vulnerable adults is the responsibility of the whole church community. The PCC has complied with its duty under Section 5 of the Safeguarding and Clergy Discipline Measure 2016 following the guidance on safeguarding children and vulnerable adults. Safeguarding training has been carried out in accordance with the guidance including Domestic Abuse awareness and safeguarding is a standing item on all PCC meetings. DBS checks have been carried out where needed.

The full PCC met 6 times during the year. PCC members who have served during all of the period from 1st January 2023 until 31st December are:

- Incumbent: The Reverend Martin Greenland (Chairman)

Elected Members

- Mr Tim Lees (Treasurer & Fabric Officer)
- Mrs Christine Fisk (Secretary)
- Mrs. Sarah Mules (Electoral Roll & Safeguarding Officer)
- Mr. John Mules (Vice Chair)
- Mrs. Louise Lees

Maintenance and Restoration

The North Porch was completed by the Friends Group. The guttering and down pipes were replaced and the drains were dug out. The Quinquennial Report was undertaken in August by Architect, Nicholas Warns and his recommendations will be implemented as far as possible in 2024. Further consideration will also be given towards remodelling the vestry area to include a small kitchen and opening up the Norman arch to build a single toilet on the south face of the church.

Friends Group

The Friends Group, which was formed in June 2022 has proved very successful in gaining local support, raising money and undertaking projects. Notable projects have been the maintenance undertaken above. In addition a variety of work has been undertaken in the churchyard by organising working parties throughout the year. A Breakfast Club has been run monthly in conjunction with the Village Hall and this has been a significant fund raiser as well as providing a benefit for the local community. A successful Café was again run in conjunction with the NCT Bike Ride in September, where an art sale also took place in the church. Other fundraising events have included an art day. Commencing in May the Friends Group introduced Champing™ to the church and this continued through the summer and became the biggest fundraiser to date for the Friends Group.

Volunteers

Thanks go to our dedicated flower arrangers in Limpenhoe and the volunteers who look after the church and churchyard at Cantley.

Financial Review

Total receipts on unrestricted funds were £8,163 and further receipts on restricted funds of £12,226 were from grants and donations.

Unrestricted income was up by 12% compared with 2022.

£5648 was spent from unrestricted funds to provide the Christian ministry from St. Botolph's Church, including the contribution to the diocesan parish share that largely provides the stipend and housing for the clergy.

Parish Share - the sum that the churches in the benefice have to find is calculated according to a formula that takes account of the number of priest-led services, average attendance and unrestricted income. We paid 69% parish share for the year.

The PCC continued to receive restricted grants from the Parish Council for the cutting of the grass in Limpenhoe and Cantley churchyards

The net result for the year was a deficit of £3706 on unrestricted funds. Adding bank and deposit balances brought forward at the beginning of the year, the balances carried forward at 31st December on unrestricted funds totalled £21,003. There remains a restricted balance of £9218

The financial outlook for 2024 and beyond looks challenging. There is significant and costly repair work to be done, which will be a drain on our limited financial resources and substantial fund raising will have to be undertaken. The Parish Share has increased by 10% and it is very unlikely this will be met in full.

Approved by the PCC and signed on their behalf by the Reverend Martin Greenland (PCC Chairman)

Chairman 16th April 2024

FINAL ANNUAL REPORT 2023/CF/TL

Appendix H

Cantley Village Hall Committee 2024 report for the Cantley, Limpenhoe & Southwood Annual Parish Meeting

28/03/2024

The last year has been very full and busy. Committee meetings have been well attended which is encouraged through refreshments and cake provided by Rosie, Margaret, and others! The committee has seen a healthy increase in active new members and volunteers at events. It has been recognised for some time that the current village hall has provided an essential community meeting place and focus for the village over the last nearly 100 years, but the fabric is in need of renovation to the point that a new hall with modern facilities is now required. Hence, the last couple of years has seen a focus on raising funds for a new hall whilst maintaining activities and encouraging continued and new uses of the hall. This has meant regular maintenance of the existing hall to ensure it is in a fit state to hire out for events but nothing beyond the essentials. Whilst it is clear improvements could be made to the hall the committee has been balanced in its approach to ensure any vital works to ensure safe use of the hall has been carried out but that any major improvements should be avoided so that funds raised can go towards a new hall.

Regular bookings have included:

- Drury Dance Fit on Tuesdays and Saturdays – sign up!
- W.I. monthly meetings, every 3rd Wednesday (except August).

- The Parish Council hire the hall for regular monthly meetings except when meetings are held twice a year at Limpenhoe village hall.
- Anthony Johnson, Martial Arts on some Sundays
- Nomads have hired the hall for regular rehearsals for new productions.

The following is a bullet point summary of key events and activities over the last year, or so.

- Used but serviceable LED lights from the sugar factory were fitted to replace the old fluorescent tubes in the hall and kitchen which will help to reduce the electricity bill. Thanks to British Sugar and Phill Walker (Acorn Electrical and Home Improvement, Hassingham) for volunteering to fit the new lights with help from Colin and Nathan McRobert who provided the scaffold tower.
- Thanks to Kel (Kelvin Myhill) for PAT testing all the electrical equipment in the hall, especially kitchen, and ensuring electrical equipment is safe.
- The power supply to the hall was upgraded by UK Power Networks as part of ensuring the supply to the Anglian Water radio mast was adequate. The Anglian Water radio mast to support water meters in the area provides a regular annual income to the village hall.
- The Coronation Event on Sunday 7th May was a great success with music provided by Yare Folk. The Parish Council funded refreshments and children's commemorative water bottles.
- The Village Hall had a refreshments stand at the Cantley Fun Day on the 8th July which raised over £500.
- A playground inspection was carried out in September by a specialist external inspector to ensure the safety of play equipment.
- Successful well-attended Jumble Sales have been held raising several hundred pounds: February & September 2023 and 17th February 2024.
- The first of a regular series of quizzes was held in October with Matt and Joe taking turns to prepare the questions. The quiz nights have proved popular, entertaining social evenings demonstrating good use of the hall and bringing in welcome funds. Three quiz nights have been held to date in October 2023, January and March 2024 and will continue every other month throughout the year.
- The Mindful Towns and Villages scheme offers free mental health training which was held at the village hall on the 23rd November. The trained volunteers joined a network of Wellbeing Champions and Cantley is now recognised as a "Mindful Village".
- A Carols and Christmas Social was held on Sunday 10th December with a service in the church followed by refreshments and a social with music by Yare Folk in the village hall.

In addition to the community fundraising events mentioned above there has been a great deal of work led by Stephen Heard on key funding activities and bids for the new village hall:

- Applications to the government Community Ownership Fund (COF) have been made twice and both times rejected. However, we have been encouraged to continue with a third and final application and help has been given by the Plunkett Foundation under an arrangement with the COF. However, it transpires we must be an incorporated charity to qualify for any funding under the COF. Therefore, we are now going through a process of establishing the village hall as a Charitable Incorporated Organisation (CIO) which is requiring concentrated work within a short timescale to meet the deadline of the final submission to the COF.
- A bid to the Broadland District Council "Pride in Place Fund", supported by the government Shared Prosperity Fund, has recently been successful which contributes £25,000 towards developing our plans for the new village hall.
- British Sugar donated £5,000 towards the new hall.
- An online crowdfunder raised £1,800.
- The Milner family donated £500 in memory of Martin Milner, a well known Cantley resident of many years, following a well-attended wake for Martin held at the village hall.

- Eleanor Allison produced a greeting card depicting the current village hall that has been on sale at local shops and events which is proving a regular earner.
- The Cantley Cock has a regular “collection tin” to raise funds and is keen to support events.
- Further donations have been received from local organisations and individuals in the village including £200 from David & David; and £100 from The Blackmore Foundation.
- The Broadland “Community at Heart Lottery” provides a regular income and we encourage everyone to sign up, see below.
- Sizer Architectural Services was commissioned to prepare a feasibility study with costings and plans of a new village hall. This provides the basis of a scheme to approach potential funders and for a community consultation on the new hall. James Sizer has also generously offered to assist in fundraising with quite exciting ideas.
- Thanks to Stephen who continues his indefatigable search for funders and with regular funding bids and networking.

Social media and marketing:

To promote the hall and our fundraising a Volunteer Marketing/Graphic Designer, Natalie Goodwin, has offered her assistance free of charge through Voluntary Norfolk. Natalie has designed logos and is working on developing a new dedicated website for the village hall. New ideas, especially for fundraising and events, are very welcome so please talk to a committee member or come along to a committee meeting, village hall event or the AGM in May.

Future events at the village hall include:

07/04/24 Bunny Drive for families. Especially with young children. Easter egg prizes!

13/05/24 Village Hall AGM, 7pm

Look out for the date of the next quiz and other events on village notice boards and the blackboard outside the village hall.

To book the village hall contact: Julie Hey – juleshey4@gmail.com

01493 701804 OR 07776 354 498

Please support us by buying a lottery ticket:

<https://www.communityatheartlottery.com/support/cantley-village-hall-development>

Or by donating to our Crowdfunding page:

<https://www.crowdfunder.co.uk/p/cantley-village-hall-development/donate/20>

Use this for your online shopping and raise funds for our new village

hall: <https://www.easyfundraising.org.uk/causes/cantley-village-hall>

Chair: Jan Davis – 07443 427 788

Vice-chair: Stephen Heard – 01493 717257

Secretary: Barbara Tuck – 07789 845 050

Playground supervisor: Michael Hutchings - 07974 507 996

Cantley Village Hall Management Committee

Appendix I

Tree warden report 2023-2024: Simon Huggins.

No direct planting has been completed this year although there has been regular monitoring of the hedgerow and copse that were planted last year. There has been some significant growth, unfortunately, however, following the extremely dry Spring and Summer seasons, the inability to provide regular watering, and the fact that the

tractor mowers can no longer mow the grass around the trees/ hedges, some of the plants have died.

Actions taken 2023 – present.

- Regular monitoring of TPO's within the parishes.
- TPO application submitted for lime trees located at the top end of Burnt House Road (No. 3, Oak House) due to neighbour report/concern of trees being felled.
- Advice given to a number of parish residents regarding tree and hedge planting and maintenance (upon request).
- Regular participation and attendance at local Tree Warden Network meetings and events.
- Successful participation and completion of Nationally recognised training (Centre for Agroecology, Water and Resilience - University of Coventry): 'Tree Nursery' and 'Biosecurity in Tree Nursery.'
- A talk to the local branch of the WI about the role of the Tree Warden and trees in general.

Current and future actions:

- Research being undertaken regarding saline friendly tree species for planting along the riverbank (The Rushcutters).
- Look into creating a group of local volunteers to help maintain the recently planted trees/ hedge with grass cutting, staking, etc.
- Continue to actively participate in the Broadland Tree Warden Network.
- Continue to actively seek new seminars, courses (such as use of a scythe), etc. to broaden and expand my knowledge base. I have been looking at taking an active role with the Buckingham Ancient Woodland Trust with this in mind.
- Continue to work with the Parish Council, and local residents alike, to continue, create, or participate in any projects, and/ or offer advice.

Simon Huggins.

One of the rowan trees planted in the border at Cantley Church.

